

Recombinant ISG15 Monoclonal Antibody

catalog number: AN300127P

Note: *Centrifuge before opening to ensure complete recovery of vial contents.*

Description

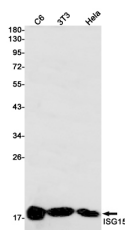
Reactivity	Human
Immunogen	Recombinant Human ISG15 protein
Host	Rabbit
Isotype	IgG
Clone	A1241
Purification	Protein A
Buffer	0.2 µm filtered solution in PBS

Applications

Recommended Dilution

WB: 1:1000-1:5000; ICC/IF: 1:100-1:200

Data



Western blot detection of ISG15 in C6,3T3,HeLa cell lysates using ISG15 antibody(1:1000 diluted).

Observed-MW:18 kDa

Calculated-MW:18 kDa

Preparation & Storage

Storage	Store at -20°C Valid for 12 months. Avoid freeze / thaw cycles.
Shipping	Ice bag

Background

The protein encoded by this gene is a ubiquitin-like protein that is conjugated to intracellular target proteins upon activation by interferon-alpha and interferon-beta. Several functions have been ascribed to the encoded protein, including chemotactic activity towards neutrophils, direction of ligated target proteins to intermediate filaments, cell-to-cell signaling, and antiviral activity during viral infections. While conjugates of this protein have been found to be noncovalently attached to intermediate filaments, this protein is sometimes secreted. [provided by RefSeq, Dec 2012]

For Research Use Only